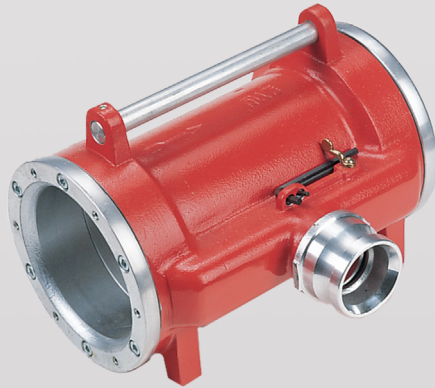


Hose Washing Attachment



Characteristics

A lightweight unit which facilitates hose washing without the use of brushes. Soiled hose is pulled through the attachment, whilst the water connection to the washer feeds two internal pressure jets which clean the outer jacket of the hose. The impact of the water from the jets also propels the hose forwards. Suitable for hoses with a diameter up to 76mm.

Supplied with Light Alloy Instantaneous Male inlet as standard, other coupling type inlets available upon request.

An integral carrying handle is fitted to the body of the unit.

Material

Light Alloy

Connections

64mm Male Instantaneous

2" Male BSP Thread

Other options available using 2" Female BSP Thread