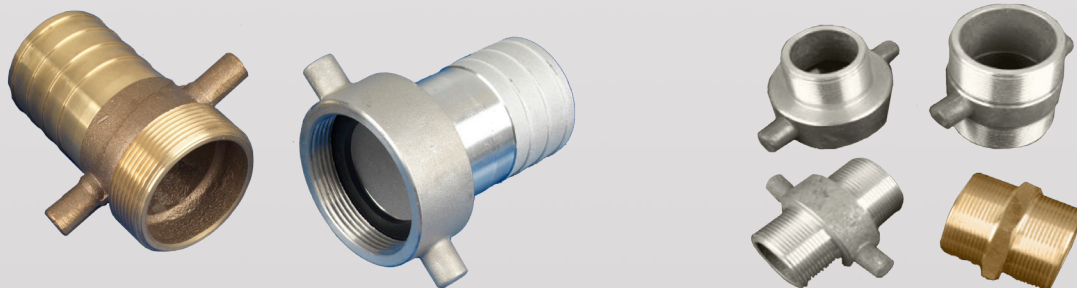


BSP Couplings & Adaptors

The BSP (British Standard Pipe) to BS2779 is a screw threaded connecting system with male and female mating parts. The thread is available in standard parallel form or as a taper.



Description

Thread sizes available from $\frac{3}{4}$ " - 4"

Material

Aluminium, Gun Metal, Brass, Stainless Steel and Polypropylene.

Options

Couplings can be supplied with either ribbed or serrated hose tails
Lugged or hexagon type
Male and Female threaded adaptors available with mixed thread options
Elbows with Male or Female threaded end
Step up or step down size adaptors available
Fixed or swivel female adaptors

Caps & Plugs

Caps and Plugs used to blank off a coupling/adaptor come with keep chain as standard for all sizes.



Washers

NBR Washers available to suit all sizes.
Hexagon or Lug spanners used for the connection of couplings supplied for all sizes.